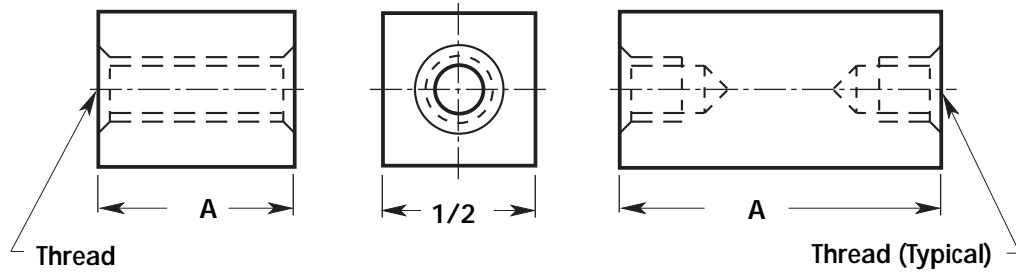


# SQUARE FEMALE STANDOFFS

1/2 140



DEPTH OF THREADS TAPPED THRU			
THREAD	ALUM • BRASS NYLON • STEEL	STAINLESS STEEL	SCREW DEPTH
6-32	1"	1"	3/8
8-32	1"	1"	7/16
10-32	1-1/8	1"	1/2
12-24	1-1/8	1"	1/2
1/4-20	1-1/4	1-1/4	9/16

BASIC NO.	PART NO.	A LENGTH	BASIC NO.	PART NO.	A LENGTH
140	01	1/8	140	35	2-1/2
140	02	3/16	140	36	2-5/8
140	03	1/4	140	37	2-3/4
140	04	5/16	140	38	2-7/8
140	05	3/8	140	39	3"
140	06	7/16	140	40	3-1/4
140	07	1/2	140	41	3-1/2
140	08	9/16	140	42	3-3/4
140	09	5/8	140	43	4"
140	10	11/16	140	44	4-1/4
140	11	3/4	140	45	4-1/2
140	12	13/16	140	46	4-3/4
140	13	7/8	140	47	5"
140	14	15/16	140	48	5-1/4
140	15	1"	140	49	5-1/2
140	16	1-1/16	140	50	5-3/4
140	17	1-1/8	140	51	6"
140	18	1-3/16	140	52	6-1/4
140	19	1-1/4	140	53	6-1/2
140	20	1-5/16	140	54	6-3/4
140	21	1-3/8	140	55	7"
140	22	1-7/16	140	56	7-1/4
140	23	1-1/2	140	57	7-1/2
140	24	1-9/16	140	58	7-3/4
140	25	1-5/8	140	59	8"
140	26	1-11/16	140	60	8-1/4
140	27	1-3/4	140	61	8-1/2
140	28	1-13/16	140	62	8-3/4
140	29	1-7/8	140	63	9"
140	30	1-15/16	140	64	9-1/4
140	31	2"	140	65	9-1/2
140	32	2-1/8	140	66	9-3/4
140	33	2-1/4	140	67	10"
140	34	2-3/8			

ORDERING INFORMATION			
XXX-XX	XX	XXX	X
Basic No & Part No	Material	Thd.	Finish
Example			
<b>140-23</b>	<b>AL</b>	<b>832</b>	<b>*</b>
* For Finish Code See Fold-Out Inside Back Cover			

MATERIAL	CODE
Aluminum	AL
Brass	BR
Stainless Steel	SS
Steel	ST